



# **DAC** **INDUSTRIES, INC.**

*Quality Products for the Fence Industry Since 1985*

**PRODUCT CATALOG**

## Hardware Bags & Signs

- Replacement Hardware for the Auto-Latch
- Includes Two Brackets with Nuts and Bolts, plus Two Carriage Bolts with Washers and Nuts

Description	Part no.	Weight ea.	Price Break	Price ea.
Sign - with Instructional Diagram	Sign - Auto-Latch			
1 3/8" Gate Frame	AL Bag 1	.4 lbs.		
1 5/8" Gate Frame	AL Bag 2	.4 lbs.		
2" Gate Frame	AL Bag 3	.4 lbs.		



## Auto-Latch Gate Stop

### Metal Gate Stop for Residential Auto-Latch

- Black Finish
- Allows Gate to Only Swing One Direction
- Hardware Included

Description	Part no.	Weight ea.	Price Break	Price ea.
Metal Gate Stop	1599	.65 lbs.		



## Mini-Latch

### 1 3/8" Gate Frame

- Ideal for Kennels
- Self-Latching
- Allows Gate to Swing Both Ways
- Can be Padlocked from Either Side
- Available for 1 3/8", 2", or 2 1/2" Gate Post with a Short Handle

Description	Part no.	Weight ea.	Price Break	Price ea.
1 3/8" Short Handle	1499	.95 lbs.		



## Residential Auto-Latch\*

### 1 3/8" Gate Frame

- Child-Resistant
- Self-Latching
- Allows Gate to Swing Both Ways
- Can be Padlocked from Either Side

Mix any size latch for price break. Sold individually or 10 or 25/box

Description	Part no.	Weight ea.	Price Break	Price ea.
1 3/8" x 1 3/8"	1500	1.3 lbs.	1-24	
1 3/8" x 2"	1502	1.3 lbs.	25-99	
1 3/8" x 2 1/2"	1525	1.3 lbs.	100+	
1 3/8" x 3"	1527	1.3 lbs.		

**\*When installed properly, these latches meet Consumer Product Safety Commission guidelines for swimming pool latches.**



## Commercial Auto-Latch\*

### 1 5/8" or 2" Gate Frame

- Child-Resistant
- Self-Latching
- Allows Gate to Swing Both Ways
- Can be Padlocked from Either Side

Mix any size latch for price break. Sold individually or 10 or 25/box

Description	Part no.	Weight ea.	Price Break	Price ea.
1 5/8" x 2"	1562	1.35 lbs.	1-24	
1 5/8" x 2 1/2"	1565	1.35 lbs.	25-99	
1 5/8" x 3"	1567	1.40 lbs.	100+	
2" x 2"	1572	1.40 lbs.		
2" x 2 1/2"	1575	1.40 lbs.		
2" x 3"	1577	1.45 lbs.		

## Square Auto-Latch\*

### Designed for Ornamental Fences

- Child-Resistant
- Self-Latching
- Allows Gate to Swing Both Ways
- Can be Padlocked from Either Side

Description	Part no.	Weight ea.	Price Break	Price ea.
1" x 1 1/2"	2015	1.9 lbs.		
1" x 2"	2020	1.9 lbs.		
1" x 2 1/2"	2025	1.9 lbs.		
1 1/4" x 1 1/2"	2215	1.9 lbs.		
1 1/4" x 2"	2220	1.9 lbs.		
1 1/4" x 2 1/2"	2225	1.9 lbs.		
1 1/2" x 1 1/2"	2515	1.9 lbs.		
1 1/2" x 2"	2520	1.9 lbs.		
1 1/2" x 2 1/2"	2525	1.9 lbs.		
Adapter Kit	2999	.9 lbs.		

Adapter Kit includes: 1" and 1 1/4" inserts, 1 1/2", 2" and 2 1/2" collars

## D&D Technologies Top Pull MagnaLatch\*

- Child-Resistant
- Industry Leading Magnetic Latching Technology
- Total Latch Height is 20 1/2"
- 6-Pin Re-Keyable Security Lock Included (KW5)
- Optional Round Post Adaptor Kit Allows for Fitting to Round Posts
- Adjusts from a 1/2" to 1 1/2" Space Between Gate Frame and Post
- Adapts to All Square Frame Gates

Description	Part no.	Weight ea.	Price Break	Price ea.
MagnaLatch Series 3 Top Pull	ML3TPKA	1.71 lbs.		
Round post adapter kit	ML3RPK	.54 lbs.		



## Chain Link Gates

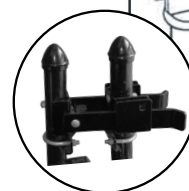
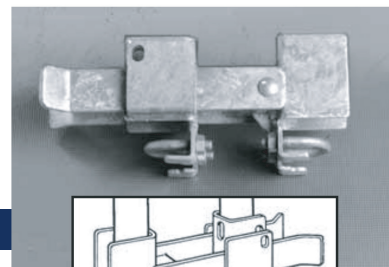
## Residential Strong Arm

## 1 3/8" Strong Arm Latch for Round Frame

- For Double Drive Gates
- Steel Latch
- Galvanized or Black Powder Coat Finish
- Adjusts for 2" to 4" Gap

*Sold Individually or 12/box.*

Description	Part no.	Weight ea.	Price Break	Price ea.
1 3/8" Round Frame - Galvanized	4138	2.9 lbs.	1-11	
1 3/8" Round Frame - Black	4138-B	2.9 lbs.	12+	



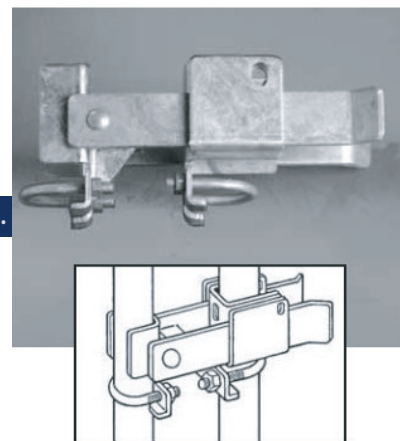
## Commercial Strong Arm

## 1 5/8" or 2" Strong Arm Latch for Round Frame

- For Double Drive Gates
- Heavy Duty Steel Latch
- Galvanized or Black Powder Coat Finish
- Fits 1 5/8" or 2" Gate Frame
- Adjusts for 2 1/2" to 6" Gap

*Sold Individually or 6/box.*

Description	Part no.	Weight ea.	Price Break	Price ea.
1 5/8" or 2" Round Frame - Galvanized	4000	9 lbs.	1-5	
1 5/8" or 2" Round Frame - Black	4000-B	9 lbs.	12-47	
			48+	

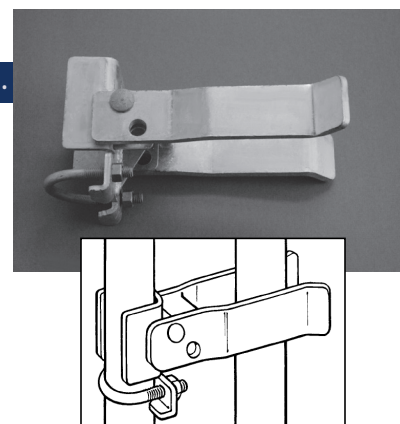


## Walk Gate Strong Arm

## 1 5/8" or 2" Walk Gate Latch for Round Frame

- Heavy Duty Steel Latch
- Galvanized or Black Powder Coat Finish
- Available for 2 1/2", 3", 4" or 6 5/8" Round Post
- Adjusts for 2" to 5" Gap

Description	Part no.	Weight ea.	Price Break	Price ea.
<b>2 1/2" Round Post – Sold individually or 12/box</b>				
Galvanized	4250	4.5 lbs.	1-9	
Black	4250-B	4.5 lbs.	10+	
<b>3" Round Post – Sold individually or 12/box</b>				
Galvanized	4300	4.5 lbs.		
Black	4300-B	4.5 lbs.		
<b>4" Round Post – Sold individually or 10/box</b>				
Galvanized	4400	4.5 lbs.		
Black	4400-B	4.5 lbs.		
<b>6 5/8" Round Post – Sold individually</b>				
Galvanized	4658	5 lbs.		
Black	4658-B	5 lbs.		





## Ornamental Gates

### Commercial Strong Arm

#### 2" Strong Arm Latch for Square Frame

- For Double Drive Gates
- Heavy Duty Steel Latch
- Galvanized or Black Powder Coat Finish
- Adapter Available for use on 1 3/4" Square Frame
- Adjusts for 2 1/2" to 3 1/4" Gap

Description	Part no.	Weight ea	Price Break	Price ea.
2" Square Frame - Galvanized	4090	7 lbs.	1-5	
2" Square Frame - Black	4090-B	7 lbs.	6-11	
			12+	



### Walk Gate Strong Arm

#### 2" Walk Gate Latch for Square Frame

- Heavy Duty Steel Latch
- Galvanized or Black Powder Coat Finish
- Adapter Available for use on 1 3/4" Square Frame
- Adjusts for 3" to 5" Gap
- Available for 2 1/2", 3", 4", or 6" Square Post

Description	Part no.	Weight ea	Price Break	Price ea.
2 1/2" Square Post – Sold individually or 12/box				
Galvanized	4290	4 lbs.	1-9	
Black	4290-B	4 lbs.	10+	
3" Square Post – Sold individually or 12/box				
Galvanized	4390	4 lbs.		
Black	4390-B	4 lbs.		
4" Square Post – Sold individually or 10/box				
Galvanized	4490	4 lbs.		
Black	4490-B	4 lbs.		
6" Square Post – Sold individually				
Galvanized	4690	5 lbs.		
Black	4690-B	5 lbs.		



### Accessories

Adapters for 1 3/4" Square Frame (Double Drive Latches Require Two)  
Replacement Hardware for Strong Arm Latches

Description	Part no.	Weight ea.	Price Break	Price ea.
Adapter	4999	1 lb.		
Hardware Bags				
Residential DD	SA Bag Res DD	.5 lb.		
Commercial DD Round	SA Bag	.5 lb.		
Commercial DD Square	SA Bag SQ	.5 lb.		
Walk Gate Round	SA WG Bag	.5 lb.		
Walk Gate Square	SA WG Bag SQ	.5 lb.		

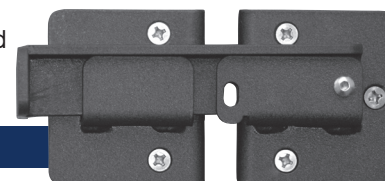


### Sentry Latch

#### Ideal for Dumpster Gates

- Access from One Side Only
- Black Powder Coat Finish
- Adjusts for 1" to 2 1/2" Gap
- 5/16" x 3 1/2" Stainless Steel Machine Screws Included
- Use on Steel, Wood on Steel, Ornamental, Polyvinyl and Wood Gates

Description	Part no.	Weight ea.	Price Break	Price ea.
Sentry Latch – Individually boxed	7000	4.75 lbs.		

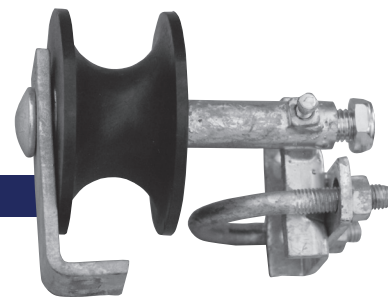


# Stealth Cantilever Rollers

## 5200

### Roll Gate Track Roller with Bracket Assembly | Nylon

- Wheel Diameter 4"
- Frame Pipe Size 1 5/8" or 2" O.D.
- Fits 1 5/8" O.D. Track



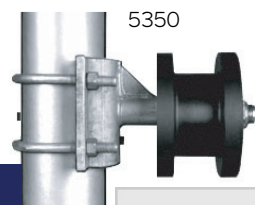
Description	Part no.	Weight ea.	Price Break	Price ea.
Roll Gate Track Roller	5200	5 lbs.		

## 5350

### Square Cantilever Gate Roller Assembly | Graphite Impregnated Nylon

- 2" Square Pipe Roller
- UV Inhibitors
- 2,200 lb. Load Rating on Single Bearing; 3,500 lb. Load Rating on Double Bearing

*Sold individually or 4/box.*



5350-4S

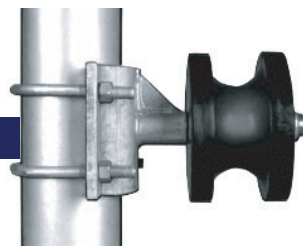
Description	Part no.	Weight ea.	Price Break	Price ea.
<b>Single Bearing</b>				
2" Sq. Gate Frame - 4" Rnd. Post	5350	11 lbs.		
2" Sq. Gate Frame - 3" Sq. Post	5350-3S	11 lbs.		
2" Sq. Gate Frame - 4" Sq. Post	5350-4S	11 lbs.		
<b>Double Bearing</b>				
2" Sq. Gate Frame - 4" Rnd. Post	5350-HD	12 lbs.		
2" Sq. Gate Frame - 3" Sq. Post	5350-3SHD	12 lbs.		
2" Sq. Gate Frame - 4" Sq. Post	5350-4SHD	12 lbs.		
2" Sq. Gate Frame - 6" Sq. Post	5350-6S	14 lbs.		

## 5500

### Round Cantilever Gate Roller Assembly | Graphite Impregnated Nylon

- 2" Round Pipe Roller
- UV Inhibitors
- 2,200 lb. Load Rating

*Sold individually or 4/box.*



Description	Part no.	Weight ea.	Price Break	Price ea.
2" Rnd. Gate Frame - 4" Rnd. Post	5500	11 lbs.		
2" Rnd. Gate Frame - 3" Rnd. Post	5500-3	11 lbs.		

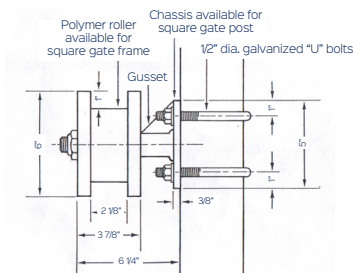
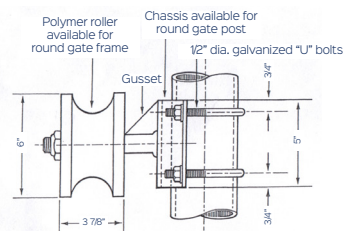
## Cantilever Roller Gate Stop

### Metal Gate Stop

- Galvanized Finish



Description	Part no.	Weight ea.	Price Break	Price ea.
Metal Gate Stop	CR Gate Stop	2.10 lbs.		



- Custom size rollers available
- Upgrade any roller to Double Bearing

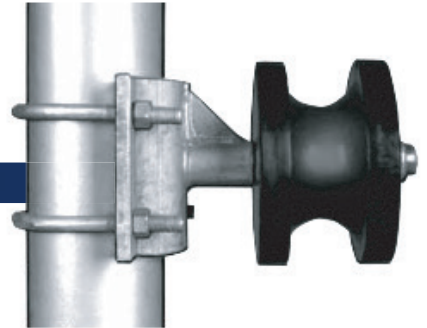
## 5800

### Round Cantilever Gate Roller Assembly | Graphite Impregnated Nylon

- 2 1/2" Round Pipe Roller
- UV Inhibitors
- 2,200 lb. Load Rating on Single Bearing; 3,500 lb. Load Rating on Double Bearing

*Sold individually or 4/box.*

Description	Part no.	Weight ea.	Price Break	Price ea.
<b>Single Bearing</b>				
2 1/2" Rnd. Gate Frame - 4" Rnd. Post	5800	11 lbs.		
2 1/2" Rnd. Gate Frame - 3" Rnd. Post	5800-3	11 lbs.		
<b>Double Bearing</b>				
2 1/2" Rnd. Gate Frame - 3" Rnd. Post	5800-3HD	12 lbs.		
2 1/2" Rnd. Gate Frame - 4" Rnd. Post	5800-4HD	12 lbs.		



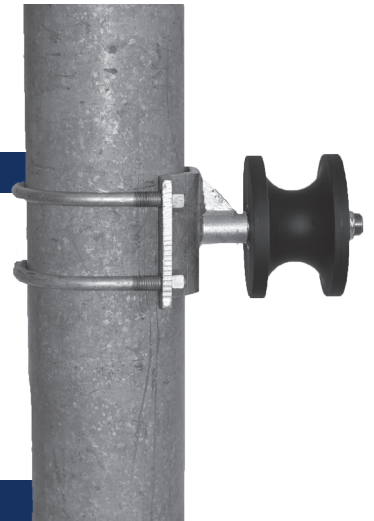
## 5658

### Round Cantilever Gate Roller Assembly | Graphite Impregnated Nylon

- 2 1/2" Round Pipe Roller
- UV Inhibitors
- Double Bearings
- Load Rating 3,500 lbs.

*Sold individually or 4/box.*

Description	Part no.	Weight ea.	Price Break	Price ea.
2 1/2" Rnd. Gate Frame - 6 5/8" Rnd. Post	5658	15 lbs.		



## 5858

### Round Cantilever Gate Roller Assembly | Graphite Impregnated Nylon

- 2 1/2" Round Pipe Roller
- UV Inhibitors
- Double Bearings
- Load Rating 3,500 lbs.

*Sold individually or 4/box.*

Description	Part no.	Weight ea.	Price Break	Price ea.
2 1/2" Rnd. Gate Frame - 8 5/8" Rnd. Post	5858	17 lbs.		



## 5950

### Stealth Roller Cover | Tough Polyethylene Plastic

- UV Inhibitors
- Custom Fit for DAC Stealth Roller

Description	Part no.	Weight ea.	Price Break	Price ea.
Roller Cover - Top	5950-T	3 lbs.		
Roller Cover - Bottom	5950-B	3 lbs.		



## 5975

### Universal Roller Cover | Tough Polyethylene Plastic

- UV Inhibitors
- Bracket Clamps Behind Roller Chassis

Description	Part no.	Weight ea.	Price Break	Price ea.
Roller Cover - Top	5975-T	3 lbs.		
Roller Cover - Bottom	5975-B	3 lbs.		



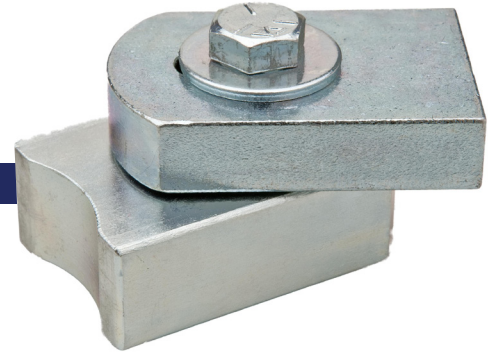
# Hinges & Closers

## 8000

### Single Bearing Hinge

- Ideal for Smaller Vehicular and Pedestrian Gates
- One Sealed Maintenance Free Bearing
- Zinc Plated Steel
- Adjustable for Easy Installation
- Ideal for Flat or Round Post
- Maximum Gate Weight 200 lbs.
- Sold Individually

Description	Part no.	Weight ea.	Price ea.
Single Bearing Hinge	8000	1 lb.	



## 8010

### Standard Hinge

- Two Sealed Maintenance Free Bearings
- Zinc Plated
- Adjustable Yoke for Easy Installation
- Ideal for Flat or Round Post (Bolt-On style for Flat Post)
- Sold Individually

Description	Part no.	Weight ea.	Price ea.
Steel – Max Gate Weight 750 lbs.	8010-S	2.5 lbs.	
Aluminum – Max Gate Weight 400 lbs.	8010-A	2.5 lbs.	
Bolt-On (Steel) – Max Gate Weight 750 lbs.	8010-BO	3.5 lbs.	



## 8020

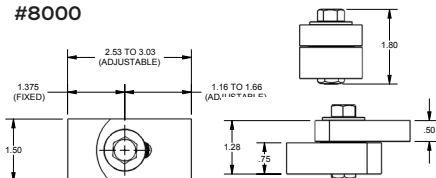
### Heavy Duty Hinge

- Three Sealed Maintenance Free Bearings
- Zinc Plated Steel
- Adjustable Yoke for Easy Installation
- Ideal for Flat or Round Post
- Maximum Gate Weight 1000 lbs.
- Sold Individually

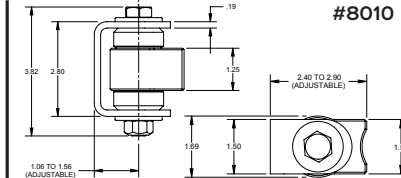
Description	Part no.	Weight ea.	Price ea.
Heavy Duty Hinge	8020	3.5 lbs.	



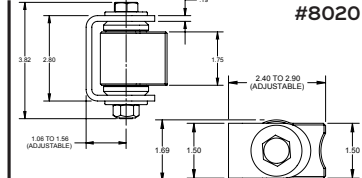
#8000



#8010



#8020



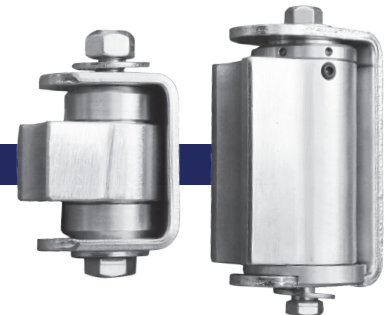


## 8030

### Self-Closing Heavy Duty Hinge

- Two Sealed Maintenance Free Bearings
- Zinc Plated Steel
- Adjustable Yoke for Easy Installation
- Ideal for Flat or Round Post
- Maximum Gate Weight 750 lbs., Self-Closes up to 300 lbs.
- 5 Tension Adjustments
- Sold as a Pair; One Self-Closing Hinge and One Steel Hinge

Description	Part no.	Weight ea.	Price ea.
Self Closing Hinge	8030	6 lbs.	



## Tru-Close Regular Duty Hinge

### Pair Regular Duty Tru-Close Hinges

- Self-Closing Max 66 lbs.
- For Square Frame Metal Gates
- Adjustable, Self-Closing Tension from Either End
- No Visible Fasteners
- "L2" Model Offers Quick-Fit Alignment Legs for Added Fitting Strength

Description	Part no.	Weight ea.	Price ea.
Regular Duty Without Legs	TCA1S3	.7 lbs.	
Regular Duty, 2 Legs	TCA1L2S3	.7 lbs.	



## Tru-Close Heavy Duty Round Post Hinge

### Pair Heavy Duty Round Post Hinge

- Self-Closing Max 132 lbs.
- Round Post Configuration
- Convenient, Reliable Performance
- Quick, Self-Closing Adjustment
- Smooth, Even Closure

Description	Part no.	Weight ea.	Price ea.
1 3/8" & 1 5/8" O.D. Frame 2", 2 1/2" or 3" O.D. Post	TCHDRND1 - MK2	2 lbs.	
2" O.D. Frame 2" or 3" O.D. Post	TCHDRND2 - MK2	2 lbs.	



## Tru-Close Heavy Duty Hinge

### Pair Heavy Duty Tru-Close Hinges

- Self-Closing Max 154 lbs.
- Convenient, Reliable Performance
- Quick, Self-Closing Adjustment
- Smooth, Even Closure
- No Visible Fasteners
- "L2" Model Offers Quick-Fit Alignment Legs for Added Fitting Strength
- Standard and Alignment Legs Work Best with Ornamental Aluminum or Steel
- Multi-Adjust Ideal for Large, Heavy or High-Traffic Vinyl or Wood Gates

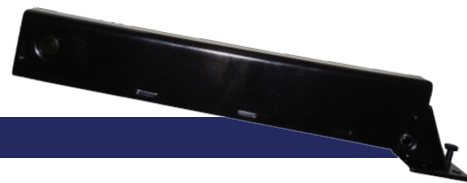
Description	Part no.	Weight ea.	Price ea.
Heavy Duty Without Legs	TCHD1AS3	1.25 lbs.	
Heavy Duty, 2 Legs	TCHD1AL2S3	1.35 lbs.	
Heavy Duty Multi-Adjust	TCHDMA1	2.65 lbs.	



## TB175

### Garden Gate Closer

- Adjustable Closing Speed
- Left or Right Hand Gates
- Hold Open Function
- Suitable for Wood or Metal Gates
- Maximum Gate Width 54"
- Maximum Gate Weight 125 lbs.
- Maximum Opening Angle of 90°
- Black Finish



Description	Part no.	Weight ea.	Price ea.
-------------	----------	------------	-----------

Garden Gate	TB175	2.5 lbs.	
-------------	-------	----------	--

## TB200 TB400 TB600

### Hydraulic Pedestrian Gate Closer

- Quiet Operation
- Left or Right Hand Gates
- Hydraulic/Nitrogen Gas Controlled Closing Speed
- Available Black or Stainless Steel
- Maximum Opening Angle of 110°
- For Use on Square Profile Gates
- TB Linx Kit available for Chain Link

Description	Part no.	Weight ea.	Price ea.
-------------	----------	------------	-----------

#### Black

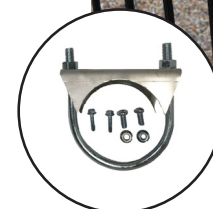
Gate 36"-52", up to 125 lbs.	TB200	6 lbs.	
Gate 40"-64", up to 175 lbs.	TB400	6 lbs.	
Gate 44"-72", up to 250 lbs.	TB600	6 lbs.	

#### Stainless Steel

Gate 36"-52", up to 125 lbs.	TB200SS	6 lbs.	
Gate 40"-64", up to 175 lbs.	TB400SS	6 lbs.	
Gate 44"-72", up to 250 lbs.	TB600SS	6 lbs.	

#### TB Linx Kits

TB Linx Kit for 2 1/2" or 3" Post	TBLINX	1 lbs.	
TB Linx Kit for 4" Post	TBLINX4	1 lbs.	



TB LINX

## Verticlose-STD

### Hydraulic Vertical Gate Closer for 180° Hinges

- Opening Angle: 180°
- Gates up to 260 lbs. and 4' wide
- Vertically Mounted
- Ideal in Combination with 180° Hinges

Description	Part no.	Weight ea.	Price ea.
-------------	----------	------------	-----------

Verticlose - STD	Verticlose - STD	16 lbs.	
------------------	------------------	---------	--

## Locinox Gate Closers

- For Left and Right Turning Gates
- Resistant to Temperature Changes
- Adjustable Overall and Final Snap Speed
- For use on Square Profile Gates
- Chain Link with use of Samson-2 and Adapter kit



## SAMSON-2 Polyvalent

### Hydraulic Gate Closer

- Opening Angle: 150°
- Gates up to 330 lbs. and 6 1/2' wide
- Horizontally Mounted
- Round Post Adapter Available (for Chain Link Gates)

Description	Part no.	Weight ea.	Price ea.
-------------	----------	------------	-----------

Samson-2	Samson-2	12 lbs.	
Round Post Adapter	Round Post Adapter	1 lb.	



ADAPTER KIT

## MAMMOTH-180 Hydraulic 180°

### Gate Closer and Hinge in One

- Opening Angle: 180°
- Gates up to 330 lbs. and 5' wide
- Vertically Mounted (Hinge Included)
- ADA Compliant
- One Hydraulic, Self-Closing, Double Bearing Hinge Paired with One DINO (Non-Self-Closing) Hinge

Description	Part no.	Weight ea.	Price ea.
-------------	----------	------------	-----------

Mammoth - 180 Silver	Mammoth-180-S	12 lbs.	
Mammoth - 180 Black	Mammoth-180-B	12 lbs.	



## TIGER Compact

### Hinge and Gate Closer in One

- Opening Angle: 180°
- Gates up to 165 lbs. and 4' wide
- Vertically Mounted (Hinge Included)
- ADA Compliant
- One Hydraulic, Self-Closing, Double Bearing Hinge Paired with One PUMA (Non-Self-Closing) Hinge



Description	Part no.	Weight ea.	Price ea.
TIGER – Silver	TIGER-S	6 lbs.	
TIGER – Black	TIGER-B	6 lbs.	

## DAC Gravity Hinges

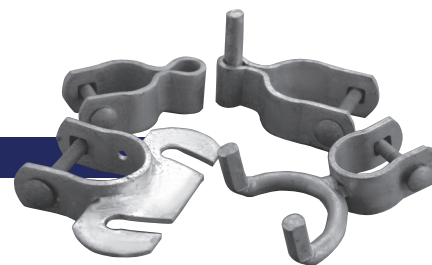
### Residential Self-Closing Hinge Sets

#### 1 3/8" Round Gate Frame

- Self-Closing
- Self-Rising
- Compatible with the Auto-Latch
- One-Way Hinge Allows Gate to Swing in Only One Direction
- Two-Way Hinge Allows Gate to Swing Both In AND Out

Mix any size for price break. Sold individually or 10/bag.

Description	Part no.	Weight ea.	Price Break
<b>One-Way</b>			
2" Gate Post	1602-OW	3.2 lbs.	1-19
2 1/2" Gate Post	1625-OW	3.3 lbs.	20+
3" Gate Post	1627-OW	3.5 lbs.	
<b>Two-Way</b>			
2" Gate Post	1602	3.2 lbs.	
2 1/2" Gate Post	1625	3.3 lbs.	
3" Gate Post	1627	3.5 lbs.	



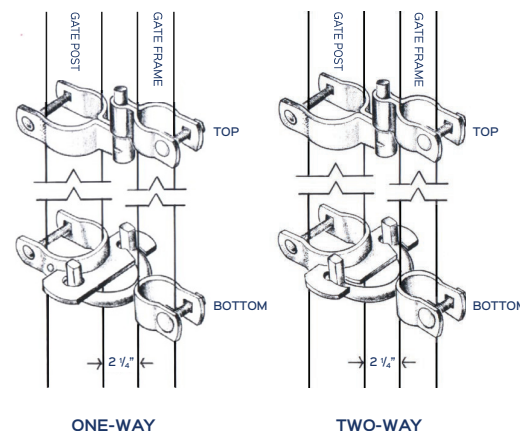
### Commercial Self-Closing Hinge Sets

#### 1 5/8" or 2" Round Gate Frame

- Self-Closing
- Self-Rising
- Compatible with the Auto-Latch
- One-Way Hinge Allows Gate to Swing in Only One Direction
- Two-Way Hinge Allows Gate to Swing Both In AND Out

Mix any size for price break. Sold individually or 10/bag.

Description	Part no.	Weight ea.	Price Break
<b>One-Way</b>			
1 5/8" x 2"	1662-OW	3.7 lbs.	1-19
1 5/8" x 2 1/2"	1665-OW	3.7 lbs.	20+
1 5/8" x 3"	1667-OW	3.8 lbs.	
2" x 2"	1672-OW	3.8 lbs.	
2" x 2 1/2"	1675-OW	3.8 lbs.	
2" x 3"	1677-OW	3.9 lbs.	
<b>Two-Way</b>			
1 5/8" x 2"	1662	3.7 lbs.	
1 5/8" x 2 1/2"	1665	3.7 lbs.	
1 5/8" x 3"	1667	3.8 lbs.	
2" x 2"	1672	3.8 lbs.	
2" x 2 1/2"	1675	3.8 lbs.	
2" x 3"	1677	3.9 lbs.	

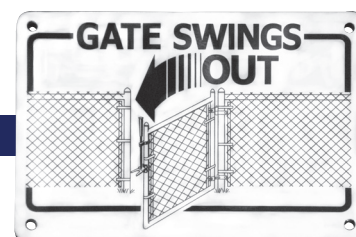


## Sign

### "Gate Swings Out" Sign

- For Use with One-Way Hinges

Description	Part no.	Weight ea.	Price ea.
4" x 6" Sign – with Diagram	Sign-hinge		



The gravity type self-closing hinge set has no springs to wear out. By raising the bottom hinge set you can increase the force at which the gate will close. The hinges can also be used to compensate for slight grade changes making it possible to install the gate on a hill, yet keep the bottom of the gate close to the ground.

To order call TOLL FREE 1-800-888-9768  
Email: [info@dacindustries.com](mailto:info@dacindustries.com)





## Surface Mount Exit Bar

- Reversible
- Dead Latch
- Hex Key Dogging Device
- Stainless Steel Latch Mechanism
- Painted Aluminum Finish
- 42" Long

- ANSI/BHMA 156.3
- Grade 1
- UL Listed

Description	Part no.	Weight ea.	Price ea.
Surface Mount Exit Bar	6000	10 lbs.	



## Detex Surface Mount Exit Bar

- Reversible
- Dead Latch
- Weather Resistant
- Hex Key Dogging Device
- Stainless Steel Latch Mechanism
- Anodized Aluminum Bar
- Black ABS Cover on Head and Push Pad
- 36" OR 48" Long

- ANSI/BHMA 156.3
- Grade 1
- UL Listed

Description	Part no.	Weight ea.	Price ea.
Detex 36" Exit Bar	6003	14 lbs	
Detex 48" Exit Bar	6004	16 lbs	



## Detex Surface Mount Exit Bar with Alarm

- Reversible
- Dead Latch
- Weatherized
- Stainless Steel Latch Mechanism
- Anodized Aluminum Bar
- Black ABS Cover on Head, Red Push Pad
- 36" OR 48" Long
- 100 dB Alarm
- Powered By a 9 Volt Battery
- Low Battery Alert

- ANSI/BHMA 156.3
- Grade 1
- UL Listed

Description	Part no.	Weight ea.	Price ea.
Detex 36" Exit Bar w/Alarm	6006	15 lbs.	
Detex 48" Exit Bar w/Alarm	6008	18 lbs	



ANSI 156.3 requires device to open with a force of 15 lbs. or less.

## Detex Surface Mount Exit Bar with Switch

- Reversible
- Dead Latch
- Weatherized
- Stainless Steel Latch Mechanism
- Anodized Aluminum Bar
- Black ABS Cover on Head and Push Pad
- 36" OR 48" Long
- Always Use in Conjunction with Other Security Items
- Provides a Normally Closed or Normally Open Contact That Can Be Used to Signal an Alarm, Remote Strobe Light or Turn a Magnetic Lock During Egress

*This bar can be used in kits in place of 6003 or 6004*

- ANSI/BHMA 156.3
- Grade 1
- UL Listed

Description	Part no.	Weight ea.	Price ea.
Detex 36" Exit Bar w/Switch	6005-36	14 lbs.	
Detex 48" Exit Bar w/Switch	6005-48	16 lbs.	



## Electromechanical Bar

- Reversible
- Weatherized
- All Metal Construction
- Black Finish
- 36" OR 48" Long
- Low Profile Design Requires Only 1/4" Movement for Activation
- Allows Free Egress or Initiate the Delay on an Exit Delay Timer
- Conductor Cable and Armored Door Cord Included

- ANSI/UL294 listed

Description	Part no.	Weight ea.	Price ea.
36" WEMB	6930	7 lbs.	
48" WEMB	6940	9 lbs.	



## Detex Advantex Series Stainless Steel Exit Bar

- Tough and Durable Design for Years of Trouble-Free Service in High-Use, High-Abuse Applications
- Reversible
- Dead Latch
- Weatherized
- Hex Key Dogging Device
- Stainless Steel Latch Mechanism and Fasteners
- All Exposed Surfaces are Finished Over Stainless Steel with PVD
- 36" OR 48" Long

- ANSI/BHMA 156.3
- Grade 1
- UL Listed

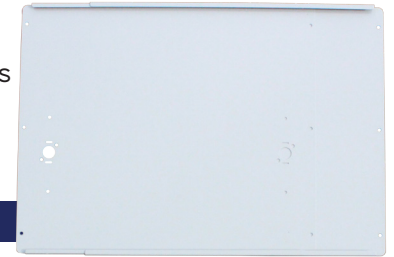
Description	Part no.	Weight ea.	Price ea.
36" Detex Advantex Exit Bar	10003	14 lbs.	
48" Detex Advantex Exit Bar	10004	16 lbs.	



## Adjustable Mounting Plate Sets

- Adjustable for Gates 29" to 52" Wide
- 12" or 24" Tall
- 16 Gauge Steel
- Silver or Black Powder Coat Finish
- Stainless Steel Mounting Screws Included
- 24" Basic - For Use with All Panic Bars Without Lock Box (Not Drilled)
- 24" Ultra - For Use with 6000 Bar AND Lock Box
- 24" Detex - For Use with Detex Bars AND Lock Box
- 12" - For Use with All Bars, With or Without Lock Box

Description	Part no.	Weight ea.	Price ea.
24" Basic - Silver	6500-S	26 lbs.	
24" Basic - Black	6500-B	26 lbs.	
24" Ultra - Silver	6600-S	26 lbs.	
24" Ultra - Black	6600-B	26 lbs.	
24" Detex - Silver	6700-S	26 lbs.	
24" Detex - Black	6700-B	26 lbs.	
12" Universal - Silver	6900-S	13 lbs.	
12" Universal - Black	6900-B	13 lbs.	



DETEX PLATE



BASIC PLATE

## Extension Plate

- Additional Panel to Allow Mounting Plate to Expand Up to 74"
- 12" or 24" Tall
- 16 Gauge Steel
- Silver or Black Powder Coat Finish

Description	Part no.	Weight ea.	Price ea.
24" Extension Plate - Silver	6800-S	13 lbs.	
24" Extension Plate - Black	6800-B	13 lbs.	
12" Extension Plate - Silver	6800-S12	7 lbs.	
12" Extension Plate - Black	6800-B12	7 lbs.	



## Lock Boxes

- 2" Lock Box for Use with Key Cylinder
- 9" Lock Box for Use with 6100, 6110 and 6200 Handles
- Silver or Black Powder Coat Finish
- Key Cylinders and Handles Sold Separately

Description	Part no.	Weight ea.	Price ea.
2" Lock Box - Silver	6025-S	.5 lb.	
2" Lock Box - Black	6025-B	.5 lb.	
9" Lock Box - Silver	6027-S	1 lb.	
9" Lock Box - Black	6027-B	1 lb.	



## Key Cylinders

- Solid Cast Brass
- 5-pin Schlage Keyway with 2 Keys
- Keyed Alike Cylinders Allow Use of Same Key for Multiple Gates

Description	Part no.	Weight ea.	Price ea.
Keyed Alike Cylinder - Rim	6010	1 lb.	
Keyed Alike Cylinder - Mortise	6013	1 lb.	
Key Cylinder - Rim	6014	1 lb.	



## Interchangeable Core Cylinder Housing

- For Customers Wishing to Match Existing Lock Sets at Their Facilities
- Core to be Provided by End User
- Use with a Best Brand Core
- Works with 6 or 7 Pin Core

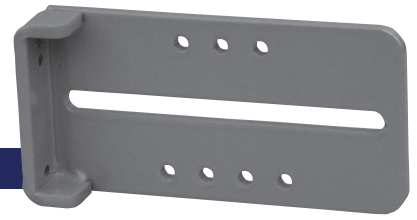
Description	Part no.	Weight ea.	Price ea.
IC Rim Housing	6011	1 lb.	
IC Mortise Housing	6012	1 lb.	



## Strike Latch Receiver Bracket

- 1/4" Steel
- 1" Gap Recommended, Adjustable for 5/8" to 2" Gap
- Stainless Steel U-bolt, Nuts, and Tek-Screws Included
- Available for 2", 3" or 4" Round or Square Latch Post – Please Specify
- Silver or Black Powder Coat Finish
- Strike Sold Separately (Included with Bars/Kits)

Description	Part no.	Weight ea.	Price ea.
Receiver - Silver	6020-S	2 lbs.	
Receiver - Black	6020-B	2 lbs.	



## Strike

- Replacement Strikes
- All Bars and Kits Come with Strikes

Description	Part no.	Weight ea.	Price ea.
Strike for 6000 Bar	STRIKE ULT	.2 lbs.	
Strike for Detex Bar	STRIKE DTX	.2 lbs.	



## Gate Latch Protector

- Provides Added Security Against Reaching Between the Gate and Latch Post
- Use on Existing Gates Where Gap is Larger Than 1"
- Mounts to Gate Frame
- 24" Tall
- Silver or Black Powder Coat Finish

Description	Part no.	Weight ea.	Price ea.
Gate Latch Protector - Silver	6015 -S	5 lbs.	
Gate Latch Protector - Black	6015 -B	5 lbs.	



## Half Moon Protector

- Provides Added Protection from Outside Tampering
- Mounts to Hinge or Latch Post
- 24" Tall
- Silver or Black Powder Coat Finish

Description	Part no.	Weight ea.	Price ea.
Half Moon Protector - Silver	6016-S	5 lbs.	
Half Moon Protector - Black	6016-B	5 lbs.	



## Push Pad Protector

- Protects Panic Bar from Being Depressed with Rope or Wire from the Outside
- 26" Wide
- Silver, Black or Red Powder Coat Finish

Description	Part no.	Weight ea.	Price ea.
Push Pad Protector - Silver	6017-S	5 lbs.	
Push Pad Protector - Black	6017-B	5 lbs.	
Push Pad Protector - Red	6017-R	5 lbs.	





## Standard Kit - No Lock Box

- Surface Mount Exit Bar #6000
- 24" Mounting Plate, Adjusts for 29" to 52" Gate Frame
- Adjustable Receiver Bracket for 3" O.D. Latch Post\*
- Stainless Steel Tek-Screws and Fasteners Included

*ALLOWS FOR EXIT ONLY. Requires holes to be drilled for exit bar.*

Description	Part no.	Weight ea.	Price ea.
Standard Kit - Silver	6030-S	38 lbs.	
Standard Kit - Black	6030-B	38 lbs.	



## Standard Kit - No Lock Box - Detex Exit Bar

- #6003 or #6004 Detex Exit Bar
- 24" Mounting Plate, Adjusts for 29" to 52" Gate Frame
- Adjustable Receiver Bracket for 3" O.D. Latch Post\*
- Stainless Steel Tek-Screws and Fasteners Included

*ALLOWS FOR EXIT ONLY. Requires holes to be drilled for exit bar.*

Description	Part no.	Weight ea.	Price ea.
Standard Kit Detex 36" Bar - Silver Plate	6035-S36	43 lbs.	
Standard Kit Detex 48" Bar - Silver Plate	6035-S48	45 lbs.	
Standard Kit Detex 36" Bar - Black Plate	6035-B36	43 lbs.	
Standard Kit Detex 48" Bar - Black Plate	6035-B48	45 lbs.	



V40

## Standard Kit - No Lock Box - Detex Exit Bar with Alarm

- #6006 or #6008 Detex Alarmed Exit Bar
- 24" Mounting Plate, Adjusts for 29" to 52" Gate Frame
- Adjustable Receiver Bracket for 3" O.D. Latch Post\*
- Stainless Steel Tek-Screws and Fasteners Included

*ALLOWS FOR EXIT ONLY. Requires holes to be drilled for exit bar.*

Description	Part no.	Weight ea.	Price ea.
Standard Kit w/alarm 36" Bar - Silver Plate	6037-S36	43 lbs.	
Standard Kit w/alarm 48" Bar - Silver Plate	6037-S48	45 lbs.	
Standard Kit w/alarm 36" Bar - Black Plate	6037-B36	43 lbs.	
Standard Kit w/alarm 48" Bar - Black Plate	6037-B48	45 lbs.	



V40 x EB x W

## Standard Kit - No Lock Box – Detex Advantex Stainless Steel Bar

- #10003 or #10004 Detex Stainless Steel Exit Bar
- 24" Mounting Plate, Adjusts for 29" to 52" Gate Frame
- Adjustable Receiver Bracket for 3" O.D. Latch Post\*
- Stainless Steel Tek-Screws and Fasteners Included

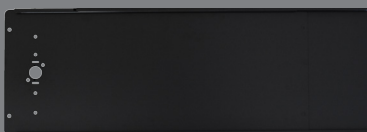
*ALLOWS FOR EXIT ONLY. Requires holes to be drilled for exit bar.*

Description	Part no.	Weight ea.	Price ea.
Standard Kit w/Advantex 36" Bar - Silver Plate	10035-S36	43 lbs.	
Standard Kit w/Advantex 48" Bar - Silver Plate	10035-S48	45 lbs.	
Standard Kit w/Advantex 36" Bar - Black Plate	10035-B36	43 lbs.	
Standard Kit w/Advantex 48" Bar - Black Plate	10035-B48	45 lbs.	



40 x W

All kits available with a 12" tall mounting plate upon request.



## Deluxe Exit Bar Kit

- Surface Mount Exit Bar #6000
- 24" Mounting Plate, Adjusts for 29" to 52" Gate Frame
- Adjustable Receiver Bracket for 3" O.D. Latch Post\*
- Lock Box - Allows for Entry from Outside of Gate
- Key Cylinder with 2 Keys
- Pre-Drilled Holes for Exit Bar and Lock Box
- Stainless Steel Tek-Screws and Fasteners Included

Description	Part no.	Weight ea.	Price ea.
Deluxe Kit - Silver	6040-S	38 lbs.	
Deluxe Kit - Black	6040-B	38 lbs.	



## Superior Exit Bar Kit - Detex Exit Bar

- #6003 or #6004 Detex Exit Bar
- 24" Mounting Plate, Adjusts for 29" to 52" Gate Frame
- Adjustable Receiver Bracket for 3" O.D. Latch Post\*
- Lock Box - Allows for Entry from Outside of Gate
- Key Cylinder with 2 Keys
- Pre-Drilled Holes for Exit Bar and Lock Box
- Stainless Steel Tek-Screws and Fasteners Included

Description	Part no.	Weight ea.	Price ea.
Superior Kit Detex 36" Bar - Silver Plate	6045-S36	43 lbs.	
Superior Kit Detex 48" Bar - Silver Plate	6045-S48	45 lbs.	
Superior Kit Detex 36" Bar - Black Plate	6045-B36	43 lbs.	
Superior Kit Detex 48" Bar - Black Plate	6045-B48	45 lbs.	



V40

## Superior Exit Bar Kit - Detex Exit Bar with Alarm

- #6006 or #6008 Detex Alarmed Exit Bar
- 24" Mounting Plate, Adjusts for 29" to 52" Gate Frame
- Adjustable Receiver Bracket for 3" O.D. Latch Post\*
- Lock Box - Allows for Entry from Outside of Gate
- Key Cylinder with 2 Keys
- Pre-Drilled Holes for Exit Bar and Lock Box
- Stainless Steel Tek-Screws and Fasteners Included

Description	Part no.	Weight ea.	Price ea.
Superior Kit w/alarm 36" Bar - Silver Plate	6047-S36	43 lbs.	
Superior Kit w/alarm 48" Bar - Silver Plate	6047-S48	45 lbs.	
Superior Kit w/alarm 36" Bar - Black Plate	6047-B36	43 lbs.	
Superior Kit w/alarm 48" Bar - Black Plate	6047-B48	45 lbs.	

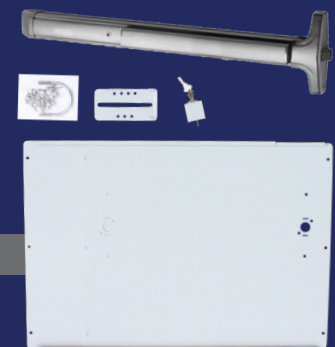


V40 x EB x W

## Premium Exit Bar Kit - Detex Advantex Stainless Steel Bar

- #10003 or #10004 Detex Stainless Steel Exit Bar
- 24" Mounting Plate, Adjusts for 29" to 52" Gate Frame
- Adjustable Receiver Bracket for 3" O.D. Latch Post\*
- Lock Box - Allows for Entry from Outside of Gate
- Key Cylinder with 2 Keys
- Pre-Drilled Holes for Exit Bar and Lock Box

Description	Part no.	Weight ea.	Price ea.
Premium Kit w/Advantex 36" Bar - Silver Plate	10045-S36	43 lbs.	
Premium Kit w/Advantex 48" Bar - Silver Plate	10045-S48	45 lbs.	
Premium Kit w/Advantex 36" Bar - Black Plate	10045-B36	43 lbs.	
Premium Kit w/Advantex 48" Bar - Black Plate	10045-B48	45 lbs.	



40 x W

\* 2", 3", 4" round or square u-bolts available for all kits upon request

To order call TOLL FREE 1-800-888-9768  
Email: info@dacindustries.com

6100-B

Outside Trim Options  
Compatible with 6045,  
6047 and 10045 Kits.

## 6100/6110 Lever Style Handle

- ADA Compliant
- Field Reversible
- Mortise Cylinder and 2 Keys Included
- Black or Silver

**AVAILABLE IN:**  
*Classroom Function - Outside lever is locked and unlocked by key. Can be left in locked or unlocked setting.*  
*Storeroom Function - Outside lever always needs key to unlock.*

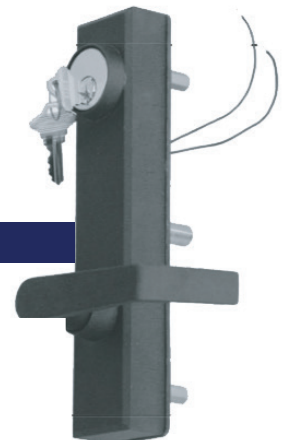
Description	Part no.	Weight ea.	Price ea.
Lever Handle - Classroom - Silver	6100-S	4 lbs.	
Lever Handle - Classroom - Black	6100-B	4 lbs.	
Lever Handle - Storeroom - Silver	6110-S	4 lbs.	
Lever Handle - Storeroom - Black	6110-B	4 lbs.	



## 6200 Electrified Control Trim

- ADA Compliant
- Mechanical Key Override
- Electric Release Within Lever, Not Electric Strike
- Handle Released by Any Access Control System or Remote Release
- Offers Fail Secure System Unlike Electromagnetic Locks
- Left or Right Handed – Must Specify (Not Field Reversible)
- Black finish
- 24 v DC Power Supply Needed
- 24 v AC - Available

Description	Part no.	Weight ea.	Price ea.
Electrified Lever - Left Hand	6200LH	4.5 lbs.	
Electrified Lever - Right Hand	6200RH	4.5 lbs.	





## Panic Hardware Outside Trim Options

### 6300 Mechanical Combination Lock

- Fully Mechanical with Large, Easy to Depress Buttons
- Knob Turn
- Single Code, Can Be Changed
- Brushed Chrome Finish

Description	Part no.	Weight ea.	Price ea.
Mechanical Combo Lock	6300	5 lbs.	



### 6400-DAC Mechanical Combination Lock

- Combo Lock with Lever Handle
- Includes Lock Box and Spindle for use with DAC Panic Bar Kits 6045, 6047 and 10045
- Recessed Buttons
- Left or Right Handed – Must Specify (Not Field Reversible)
- Single Code, Can Be Changed
- Marine Grade Finish

Description	Part no.	Weight ea.	Price ea.
Silver Lock Box - Left Hand	6400-DAC-SLH	6 lbs.	
Silver Lock Box - Right Hand	6400-DAC-SRH	6 lbs.	
Black Lock Box - Left Hand	6400-DAC-BLH	6 lbs.	
Black Lock Box - Right Hand	6400-DAC-BRH	6 lbs.	



6400-DAC-BLH



## 115P Mechanical Combination Lock for Panic Bar

- Combo Lock with Lever Handle
- For Use with Non-Detex Brand Panic Bars
- Recessed Buttons
- Field Reversible
- Single Code, Can Be Changed
- Marine Grade Finish

Description	Part no.	Weight ea.	Price ea.
Combo Lock	115P	5 lbs.	



## 2835 Combo Lock/Lever Handle

- Passage Function (Ability to Leave Unlocked)
- Free Exit Lever Handle
- Field Reversible
- Single Code, Can Be Changed
- Marine Grade Finish
- Lock Box Required for Use on Gates

Description	Part no.	Weight ea.	Price ea.
Combo Lock	2835	4 lbs.	



## 2835-DC Dual Combination Lock/Lever Handle

- Passage Function (Ability to Leave Unlocked)
- Single Code (per side), Can Be Changed
- Marine Grade Finish
- Lock Box Required for Use on Gates

Description	Part no.	Weight ea.	Price ea.
Dual Combo Lock	2835-DC	5 lbs.	



## GB2500 Gate/Lock Box

- For 2835 and 2835-DC Handles
- Weldable Steel OR Aluminum
- 4 3/4" W x 7 5/8" H x 1 3/4" D

Description	Part no.	Weight ea.	Price ea.
Steel Lock Box	GB2500	2.6 lbs.	
Aluminum Lock Box	GB2500AL	1.5 lbs.	



## 2835 Key Override

- For 2835 and 2835DC Handles
- Use on One or Both (Requires Two) Sides
- Marine Grade Finish

Description	Part no.	Weight ea.	Price ea.
Key Override	2835-KO		



## 1150 Heavy Duty Combo Lock/Lever Handle

- Passage Function (Ability to Leave Unlocked)
- Free Exit Lever Handle
- Field Reversible
- Single Code, Can Be Changed
- Recessed Buttons
- Marine Grade Finish
- Lock Box Required for Use on Gates

Description	Part no.	Weight ea.	Price ea.
HD Combo/Lever	1150	6 lbs.	



## 1150-DC Heavy Duty Dual Combo Lock/Lever Handle

- Passage Function (Ability to Leave Unlocked)
- Single Code (per side), Can Be Changed
- Recessed Buttons
- Marine Grade Finish
- Lock Box Required for Use on Gates

Description	Part no.	Weight ea.	Price ea.
HD Dual Combo/Lever	1150-DC	7 lbs.	



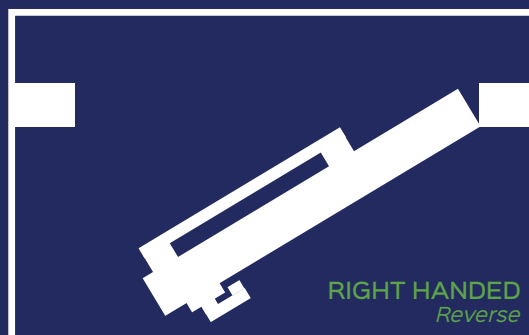
## GB1150 Gate/Lock Box

- For 1150 and 1150-DC Handles
- Weldable Steel OR Aluminum
- 4 3/4" W x 7 5/8" H x 1 3/4" D

Description	Part no.	Weight ea.	Price ea.
Steel Lock Box	GB1150	2.6 lbs.	
Aluminum Lock Box	GB1150AL	1.5 lbs.	



## Handing Diagram



Handing is always determined by the hinge location on the exterior. As exit doors always swing outward, the handing can be LHR (hinge on left hand side) or RHR (hinge on right hand side).

## 2,000 lbs. Holding Force Gate Lock

- Holding Force 2000 lbs.
- Fail Locked (Remains Locked Without Power)
- Automatic Dual Voltage - 12/24VDC
- Self-Aligning Receiver
- Indoor or Outdoor Use
- Black Finish
- Bracket Kit Available

Description	Part no.	Weight ea.	Price ea.
Gate Lock, 12/24VDC	11000	6 lbs.	



## Flex-Mount Gate Lock Bracket Kits

- Allows 11000 Gate Lock to be Mounted Easily, Without Special Tools
- Mount on Fence or Gate Posts (Maximum 3" Round)
- Includes All Hardware and Post Shims
- Zinc Plated Steel
- Bolt-On or Weld

Description	Part no.	Weight ea.	Price ea.
Flex-Mount Kit for Sliding Gate	11010	7 lbs.	
Flex-Mount Kit for Swing Gate	11020	7 lbs.	



## Electric Strike HES 9600

- Surface Mounted
- Accommodates Rim Exit Devices
- Stainless Steel Construction
- Outdoor Rated, Windstorm Rated
- Field Selectable Fail Safe or Fail Secure
- Field Selectable 12 or 24 Volt DC
- Field Reversible
- Satin Stainless Steel Finish

- ANSI/BHMA 156.31
- Grade 1
- UL Listed

Description	Part no.	Weight ea.	Price ea.
Electric Strike	11100	1.75 lbs.	



## Gate Handle

- Convenient Gate Opening and Closing
- Fits Metal, Wood, Vinyl Gates. Left or Right Opening.
- Simple and Stylish
- Polymer Construction, Strong and 100% Rust Proof

Description	Part no.	Weight ea.	Price ea.
Gate Handle	DDGH	1 lbs.	

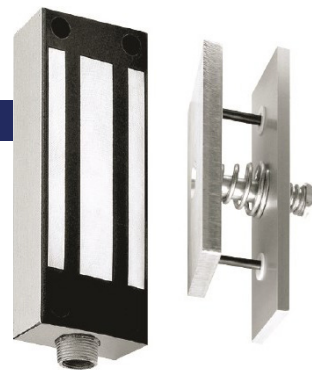




## 1200 lbs. Holding Force Gate Magnalock® M62FG-SASM

- Holding Force 1200 lbs.
- Shock Absorbing Strike Mount
- Fully Sealed Electronics, Tamper Proof and Weatherproof
- Patented Instant Release Circuit, No Residual Magnetism
- Automatic Dual Voltage – 12/24VDC
- Indoor or Outdoor Use

- ANSI/BHMA 156.23
- Grade 1
- UL Listed



Description	Part no.	Weight ea.	Price ea.
Magnalock Gate Lock	11200	12 lbs.	

## Detex Battery Powered Door or Wall Mount Exit Alarm

- Battery Powered Alarm for Secured Doors or Gates
- Alarm Sounds with Unauthorized Exit
- 100 dB Alarm
- Powered by a 9 Volt Battery, Low Battery Alert
- Tamper Resistant Housing
- Weatherized
- Available in silver or black



Description	Part no.	Weight ea.	Price ea.
Battery Alarm Silver	6009-S	2 lbs.	
Battery Alarm Black	6009-B	2 lbs.	

## Detex Battery Eliminator

- Powers 9 Volt Security Devices Without Relying on Batteries
- Powers up to 3 Battery Operated Devices
- Compatible with 6006, 6008, 6009



Description	Part no.	Weight ea.	Price ea.
Detex Battery Eliminator	6961	4 lbs.	

## Detex Flex Conduit

- Used to Protect Outdoor or Exposed Wires and Cables.
- Weatherized Flex Conduit Kit includes Conduit, Fittings and Waterproof Wire Nuts



Description	Part no.	Weight ea.	Price ea.
3' Conduit Kit	FC3W	1 lbs.	
10' Conduit Kit	FC10W	1 lbs.	



DAC Industries, Inc.  
is a Michigan based  
manufacturer and supplier,  
providing high-quality gate  
hardware for the fencing  
industry since 1985. From  
gate latches to hinges,  
cantilever rollers to panic exit  
hardware, the knowledgeable  
staff at DAC Industries will  
meet your hardware needs  
and exceed your customer  
service expectations.

For over 30 years, DAC  
Industries has been  
developing its product line to  
meet the growing demands of  
the industry. A leader in hard  
to find hardware, DAC offers  
products built to the highest  
standards in the industry.



600 Eleventh Street, N.W. Grand Rapids, MI 49504  
Phone: (616) 235.0140 Toll Free: (800) 888.9768 Fax: (616) 235.2901

Connect with us on social media: [!\[\]\(339a16584d5da0f0a3ca4e9ec17bf6a1\_img.jpg\)](#) [!\[\]\(e06a1d39938b2f5d7a2c3618fea4f77f\_img.jpg\)](#)