



600 Eleventh Street NW
Grand Rapids, MI 49504
Phone: (800) 888-9768 (616) 235-0140
Fax: (616) 235-2901 Email: info@dacindustries.com
www.dacindustries.com

Part #6045 - Superior Exit Bar Kit Installation Guide

Materials Included

- 1 - Mounting Plate – 2 pieces with inner and outer plate (reversible)
- 8 - tek-screws, stainless steel
- 1 - exit bar
- 1 - receiver plate and strike
- 1 - 3/8" U-bolt, stainless steel
- 2 - flat washers
- 2 - cap nuts, stainless steel
- 3 - ¼" X ¾" machine screws with nylon lock nuts
- 2 - ¼" X 1" machine screw with nylon lock nuts
- 2 - 1 ¼" sheet metal screws
- Lock box and key cylinder with back plate and screws

Tools Recommended:

- Hammer
- Center Punch
- Electric Drill with 3/8" Socket
- Magnetic Torpedo Level
- Adjustable Wrench
- Combination Screw Driver

Determine gate width allowing approximately 1" for the latch side of the gate plus an allowance for the gate hinges you are using. **Be sure to include a horizontal brace in the area of the mounting plate for chain link gates.** Ornamental gates should not need horizontal bracing.

Outside plate can be reversed for either left or right hand installation. Mounting plate will slide to proper width. Plate will be installed on inside of gate frame.

Take lock box and insert into slots on plate and install two 3/16" flat-head screws to hold in place. Install cylinder into lockbox by using cylinder back plate and screws. **Be sure key position allows for key removal.** Install back plate subassembly using the two outer holes and the 1/4" X 3/4" machine screws with locknuts. Depress pushpad and install exit bar on backplate subassembly, also install the two 1/4" X 1/4" screws into subassembly. If the exit bar is too wide to fit the gate, cut end of bar to make shorter.

Exit bar height is approximately 40" to 42" above floor. **Check your local code.** Locate mounting plate on gate frame and determine where tension bar will need to be cut and removed. Attach mounting plate to gate by using tek-screws. (Hint- drilling pilot holes first into thick wall pipe will make it easier to install tek-screws.)

Drill two 1/4" holes through mounting plate where needed for back support bracket and install with 1/4" X 1" machine screws with lock nut or just use sheet metal screw if desired.

Trim and knuckle fabric by lockbox area.

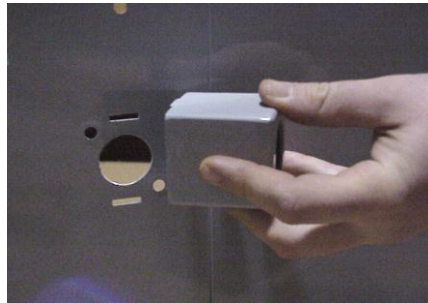
Install strike latch onto receiver bracket using the two 1/4" X 3/4" screws provided. After mounting plate and exit bar are installed on gate, install receiver bracket on latch post by using u-bolt with flat washer and cap nuts. Adjust so that exit bar latch hits strike. Check for smooth operation and engagement. Install two tek-screws through receiver into post.

- **The installation of a transom over gate for added stability is recommended.**

Superior Exit Bar Kit Installation



1. Determine left or right hand installation. Outer plate is reversible.



2. Install lockbox and key cylinder.



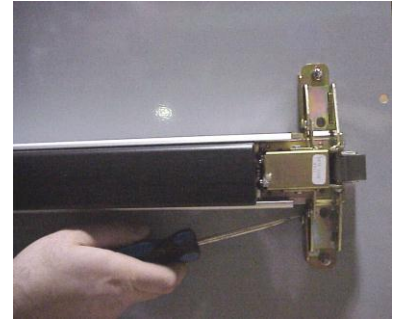
3. Use back plate with screws to hold key cylinder. ***Be sure key position allows for key removal. If cylinder is installed incorrectly, key cannot be removed!**



4. Install backplate subassembly. *Use two 1/4-20 x 3/4" screws.



5. Depress pushpad and install exit bar on backplate subassembly.



6. Install 1/4-20 x 1/4" screws through exit bar into backplate subassembly.



7. Slide plate to width of gate and attach to frame.



8. Cut and remove tension bar. Cut and knuckle fabric.

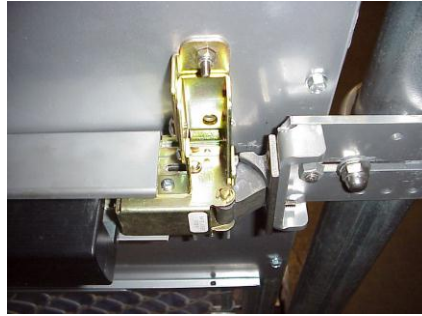


9. Cut bar to fit frame. Install endcap bracket and endcap using machine screw and nut or sheet metal screws.

Superior Exit Bar Kit Installation



10. Screw strike latch to latch bracket.



11. Adjust so that exit bar latch hits strike.

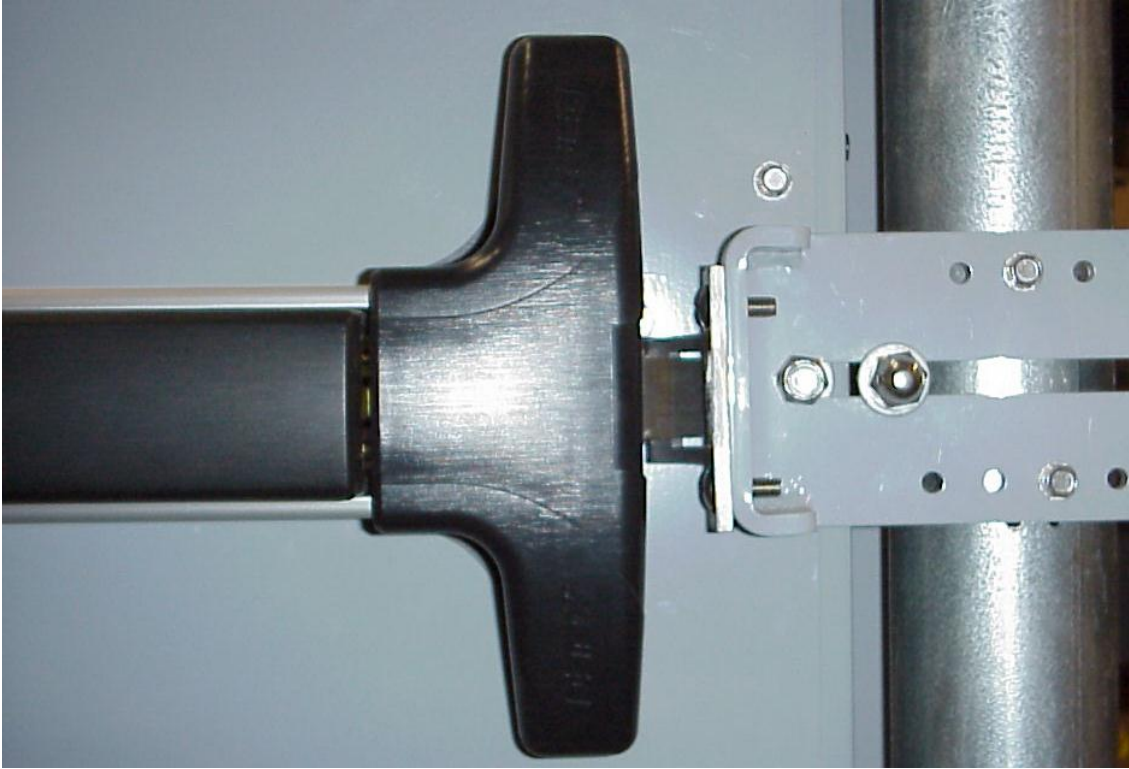


12. Install Cover.



13. After latch bracket is adjusted properly, attach to post with tek-screws.





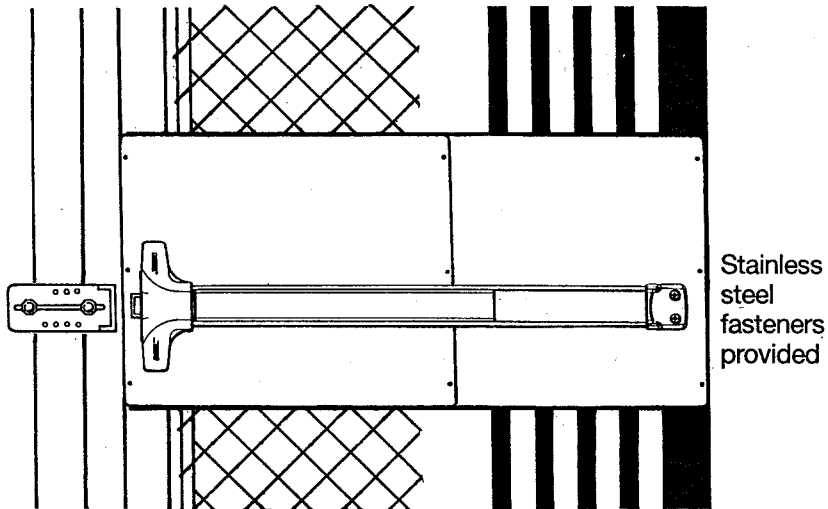
Receiver must act as a gate stop.



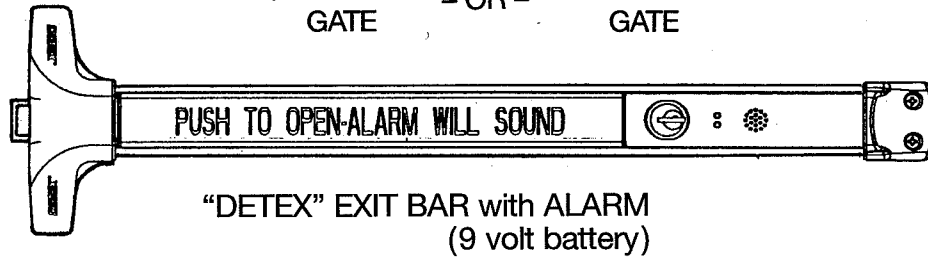
Guards are available for extra security or for gaps greater than 1" at an additional cost.



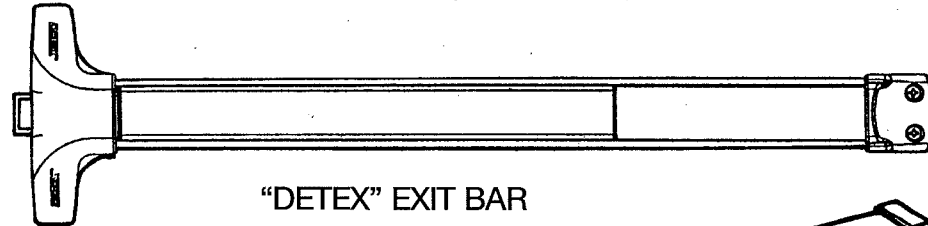
EXIT DOOR HARDWARE



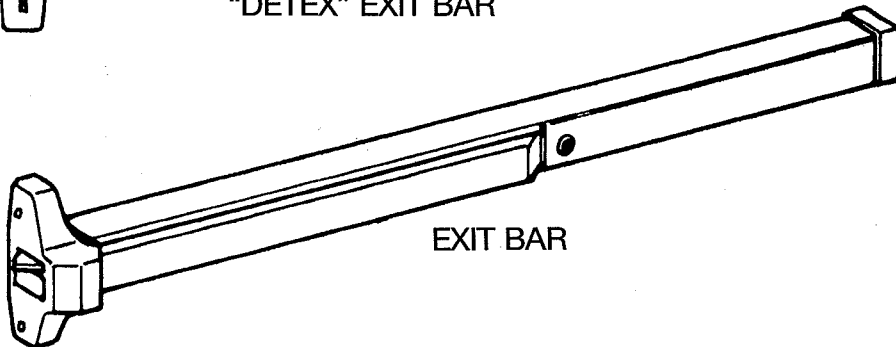
CHAIN LINK GATE - OR - ORNAMENTAL GATE



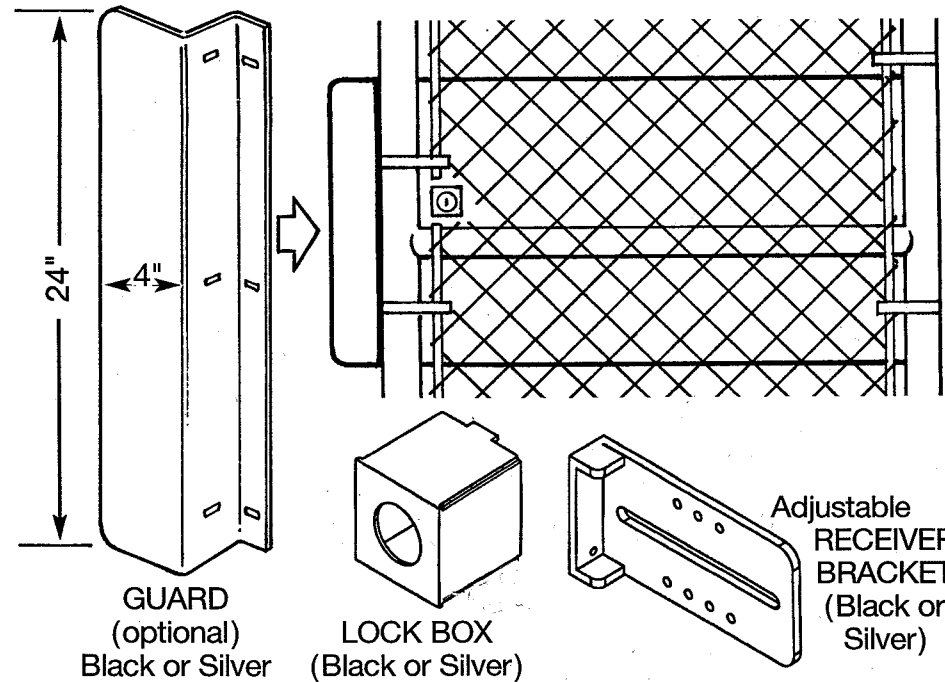
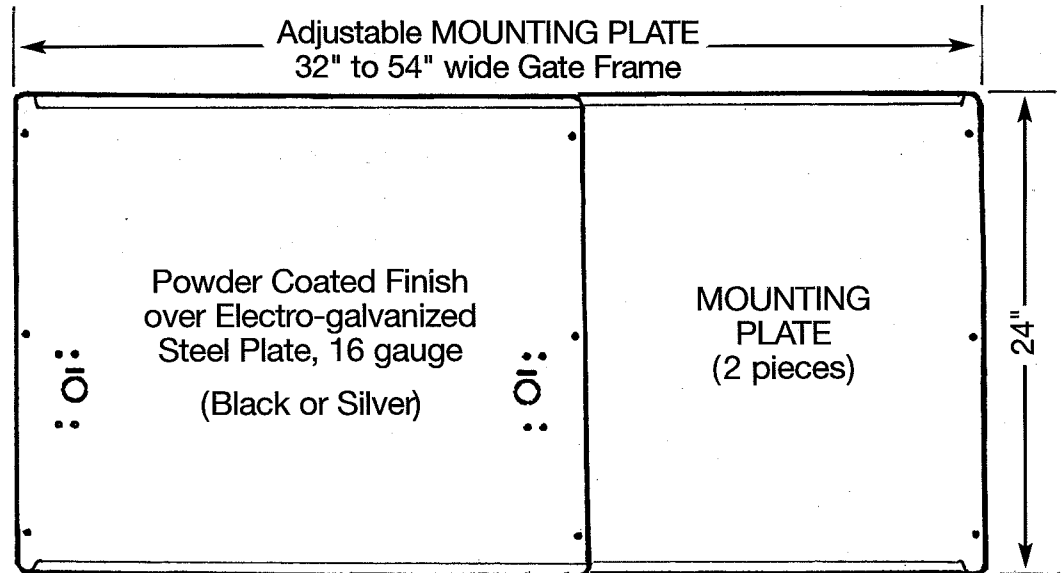
"DETEX" EXIT BAR with ALARM
(9 volt battery)



"DETEX" EXIT BAR



EXIT BAR



EXIT DOOR HARDWARE

DAC INDUSTRIES 1-800-888-9768
www.dacindustries.com

JOB / PROJECT

DATE

____ OF ____