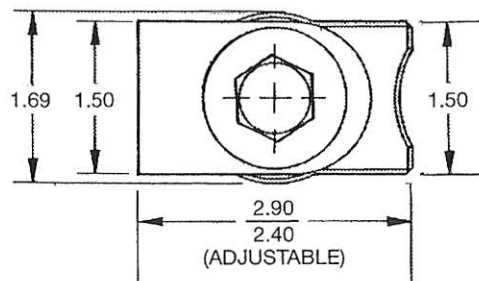
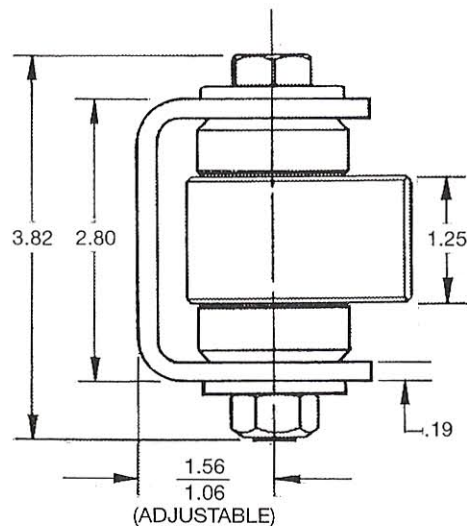
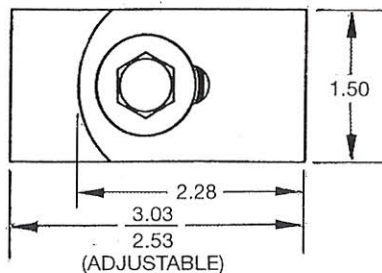
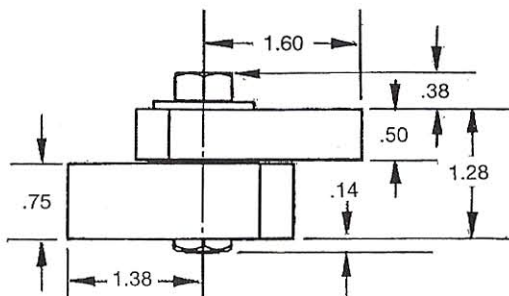
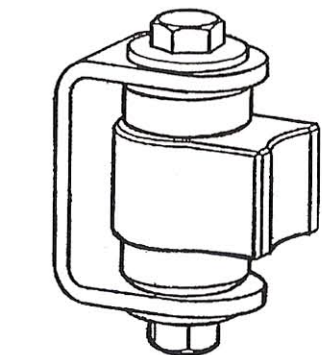
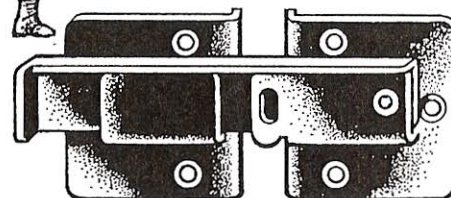


SEALED BEARING HINGES

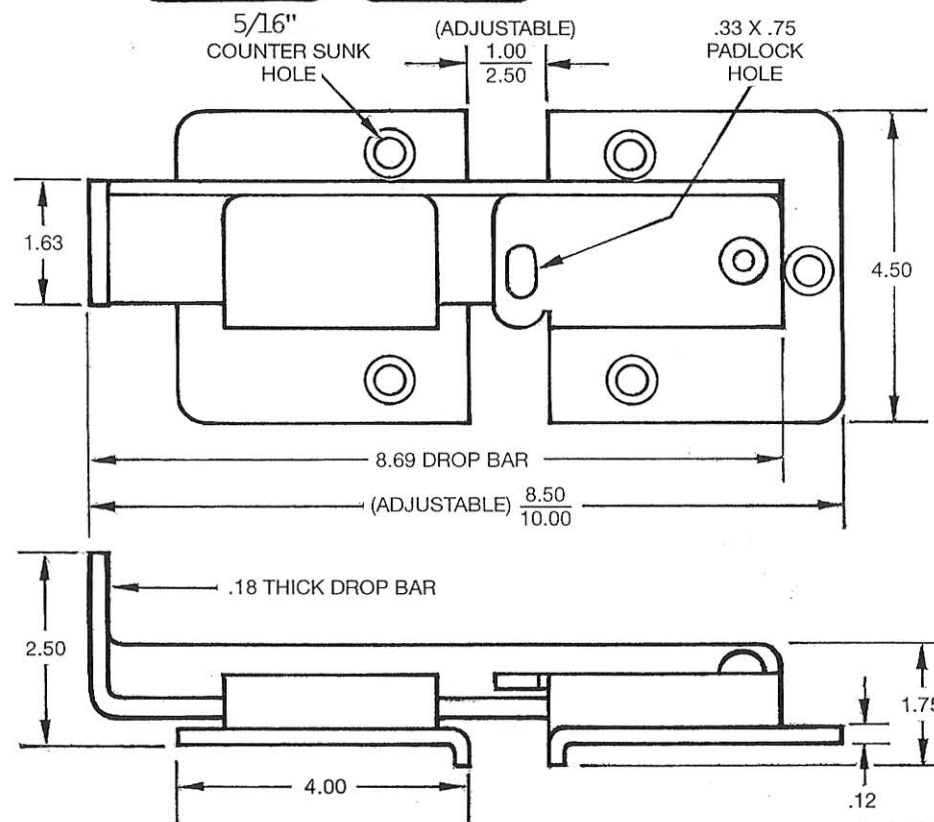
- Maintenance free.
- Use on round or square framework.
- Steel or aluminum available.
- Weld on or bolt on models.
- Field adjustable.



HEAVY DUTY DOUBLE GATE LATCH SENTRY LATCH



- Use on steel gate frames, wood on steel, ornamental, polyvinyl and wood gates.
- Allows access only from outside of gate.
- Black powder coat finish.
- Lockable.
- Stainless steel flat head machine screws included.
- Drop rod still recommended.



STEALTH SERIES

- CANTILEVER ROLLERS
- CANTILEVER ROLLER COVER

DAC INDUSTRIES 1-800-888-9768
www.dacindustries.com

JOB / PROJECT

DATE

OF